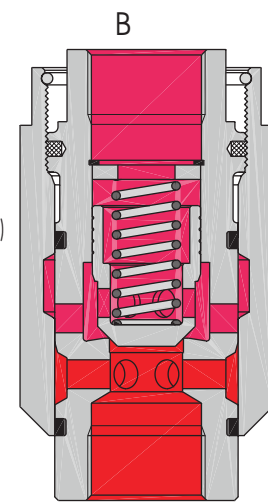
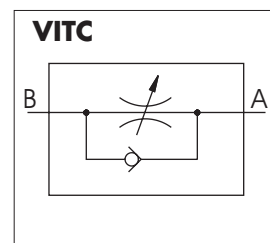
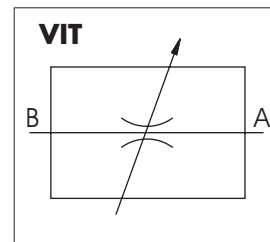


Veljan Inline Throttle valves are available in three basic sizes 03 (3/8"), 06 (3/4"), 10 (1 1/4") and in two configurations - Inline Throttle (VIT) as well as Inline Throttle with reverse free flow Check valve (VITC). The sizes can be extended with the help of fittings according to the dimensional table. These valves are suitable for mounting in line with piping. Series VIT and VITC valves are of poppet design and superior - both in design and function even at high flow conditions. These are threaded type available for maximum pressure up to 4500 psi (315 bar) and maximum flow up to 105 gpm (400 lpm).



SPECIFICATIONS

General

Type	:	In-line Throttle valve/Throttle with check valve
Design	:	Poppet type
Type of mounting	:	In-line threaded mounting
Port sizes (nominal)	:	3/8", 3/4", 1 1/4"
Direction of flow	:	A → B
Ambient temperature	:	-20°C...+60°C (-4°F...+140°F)
Special working conditions	:	Consult VELJAN

Hydraulics

Operating Pressure range	:	Minimum 0 psi (0 bar)		
		Maximum 4500psi (315 bar)		
Cracking pressure	:	4.5 psi (0.3 bar)		
	:	VIT/VITC 03 (3/8")	VIT/VITC 06 (3/4")	VIT/VITC 10 (1 1/4")
Maximum flow gpm (lpm)	:	13 (50)	53 (200)	105 (400)
Nominal flow gpm (lpm)	:	8 (30)	30 (115)	68 (260)
Fluid	:	Mineral oil as per DIN 51524/25		
		or other fluids on request		
Fluid Temperature Range	:	-18°C...+80°C (0°F...+176°F)		
Viscosity recommended	:	30 cSt (180 SSU)		

ORDERING CODE

Series

VI = In line

Valve type

T = throttle valve TC = throttle with check valve

Size

03 = 3/8" Size 06 = 3/4" Size 10 = 1 1/4" Size

Thread connections

(For 03 size)

B01 = 1/4" B.S.P.²⁾

B02 = 3/8" B.S.P.²⁾

B04 = 1/2" B.S.P.¹⁾

(For 06 size)

B04 = 1/2" B.S.P.²⁾

B06 = 3/4" B.S.P.²⁾

B08 = 1" B.S.P.¹⁾

(For 10 size)

B10 = 1 1/4" B.S.P.²⁾

B12 = 1 1/2" B.S.P.¹⁾

VI TC 03 - B04 3 - A 1

Seal class

1 = S1 Seals (Nitrile)

Design letter

Cracking pressure

0 = No Spring

3 = 0.3 bar Spring

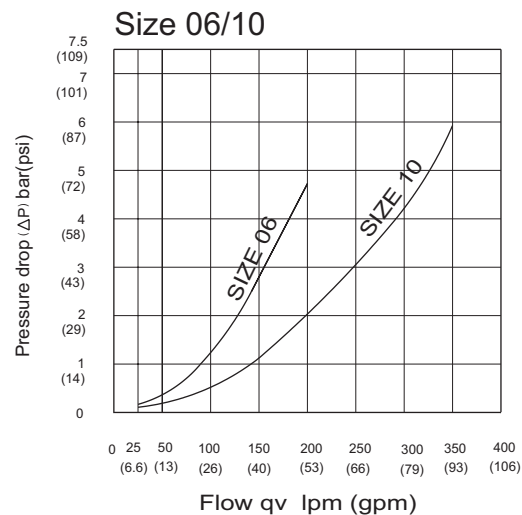
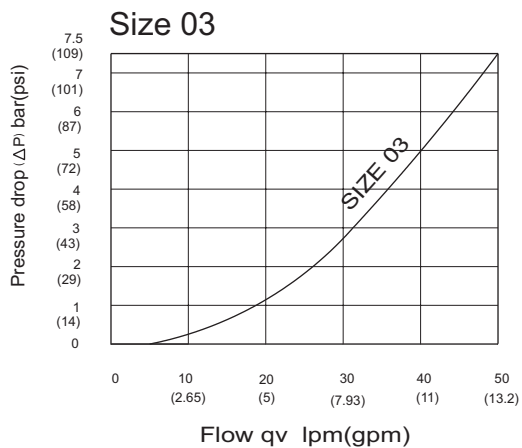
¹⁾ -Basic size ²⁾ -With reducer fittings.



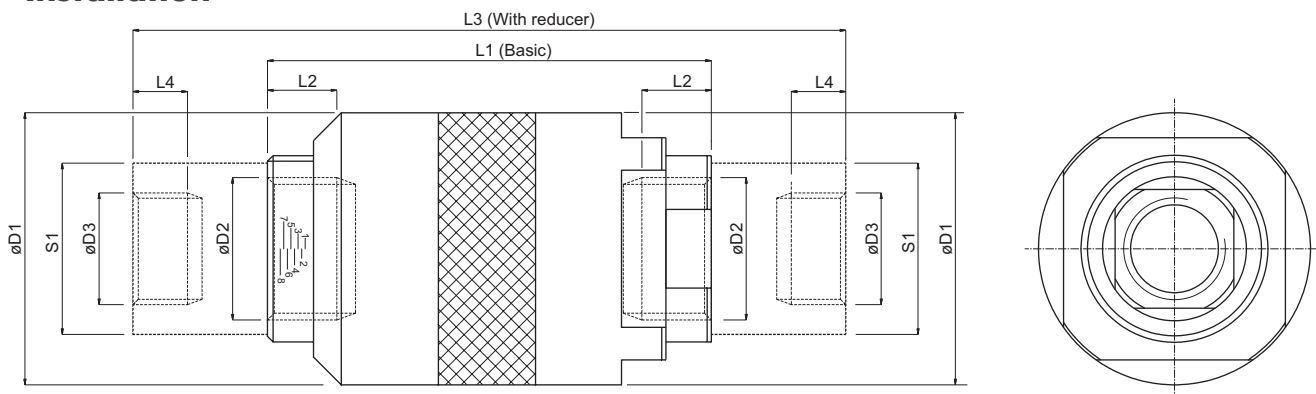
$\Delta p - qv$ - Characteristics

(Fluid 60 cSt at 40° C)

Test temp. 50° C \pm 10%



Installation



Size		L1	L2	L3	L4	øD1	øD2	øD3	S1	S2	Weight
03 - Basic	inch	3.62	0.63	-	-	1.89	1/2" BSP	-	1.07 A/F	1.81 A/F	1.09 lbs
	mm	92.0	16.0	-	-	48.0		-	27 A/F	46 A/F	0.5 kg
03 - With 3/8" BSP REDUCERS	inch	-	-	5.04	0.33	1.89	-	3/8" BSP	1.07 A/F	1.81 A/F	1.53 lbs
	mm	-	-	128.0	8.5	48.0	-		27 A/F	46 A/F	0.7 kg
03 - With 1/4" BSP REDUCERS	inch	-	-	4.56	0.33	1.89	-	1/4" BSP	1.07 A/F	1.81 A/F	1.32 lbs
	mm	-	-	116.0	8.5	48.0	-		27 A/F	46 A/F	0.6 kg
06 - Basic	inch	4.92	0.708	-	-	2.75	1" BSP	-	1.73 A/F	2.5 A/F	3.07 lbs
	mm	125.0	18.0	-	-	70.0		-	44 A/F	63.5 A/F	1.4 kg
06 - With 3/4" BSP REDUCERS	inch	-	-	7.52	0.51	2.75	-	3/4" BSP	1.73 A/F	2.5 A/F	5.05 lbs
	mm	-	-	191.0	13.0	70.0	-		44 A/F	63.5 A/F	2.3 kg
06 - With 1/2" BSP REDUCERS	inch	-	-	6.10	0.41	2.75	-	1/2" BSP	1.73 A/F	2.5 A/F	3.95 lbs
	mm	-	-	155.0	10.5	70.0	-		44 A/F	63.5 A/F	1.8 kg
10 - Basic	inch	6.30	0.86	-	-	3.54	1 1/2" BSP	-	2.36 A/F	3.15 A/F	6.59 lbs
	mm	160.0	22.0	-	-	90.0		-	60 A/F	80 A/F	3.0 kg
10 - With 1 1/4" BSP REDUCERS	inch	-	-	9.33	0.787	3.54	-	1 1/4" BSP	2.36 A/F	3.15 A/F	9.89 lbs
	mm	-	-	237.0	20.0	90.0	-		60 A/F	80 A/F	4.5 kg

